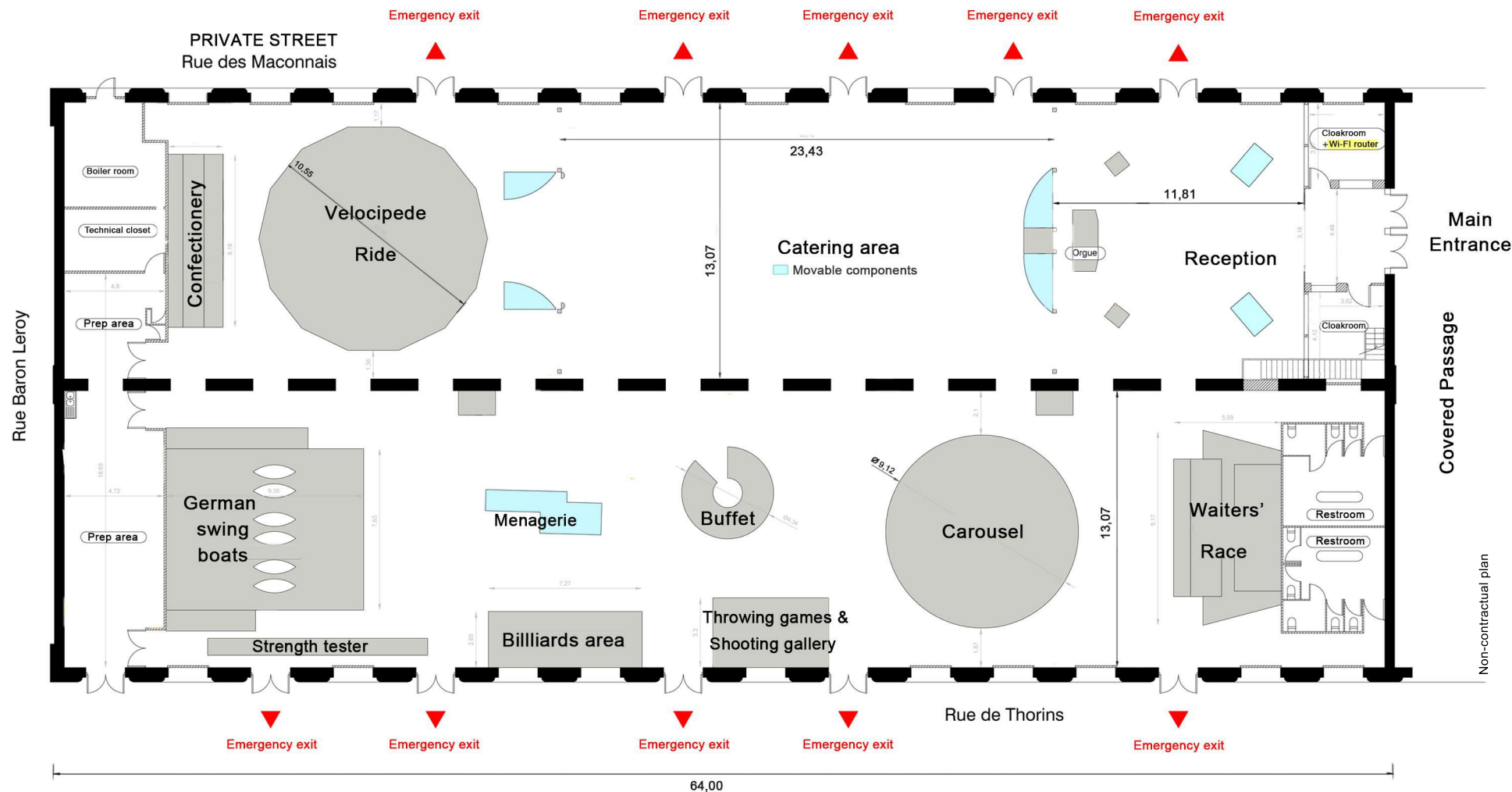




FEATURES Surface : 1700sqm Maximum capacity : 900 people

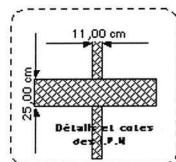
Height under girder : +/- 4,5m Ridge height : 9,5 m

Entrance : 53 avenue des terroirs de France

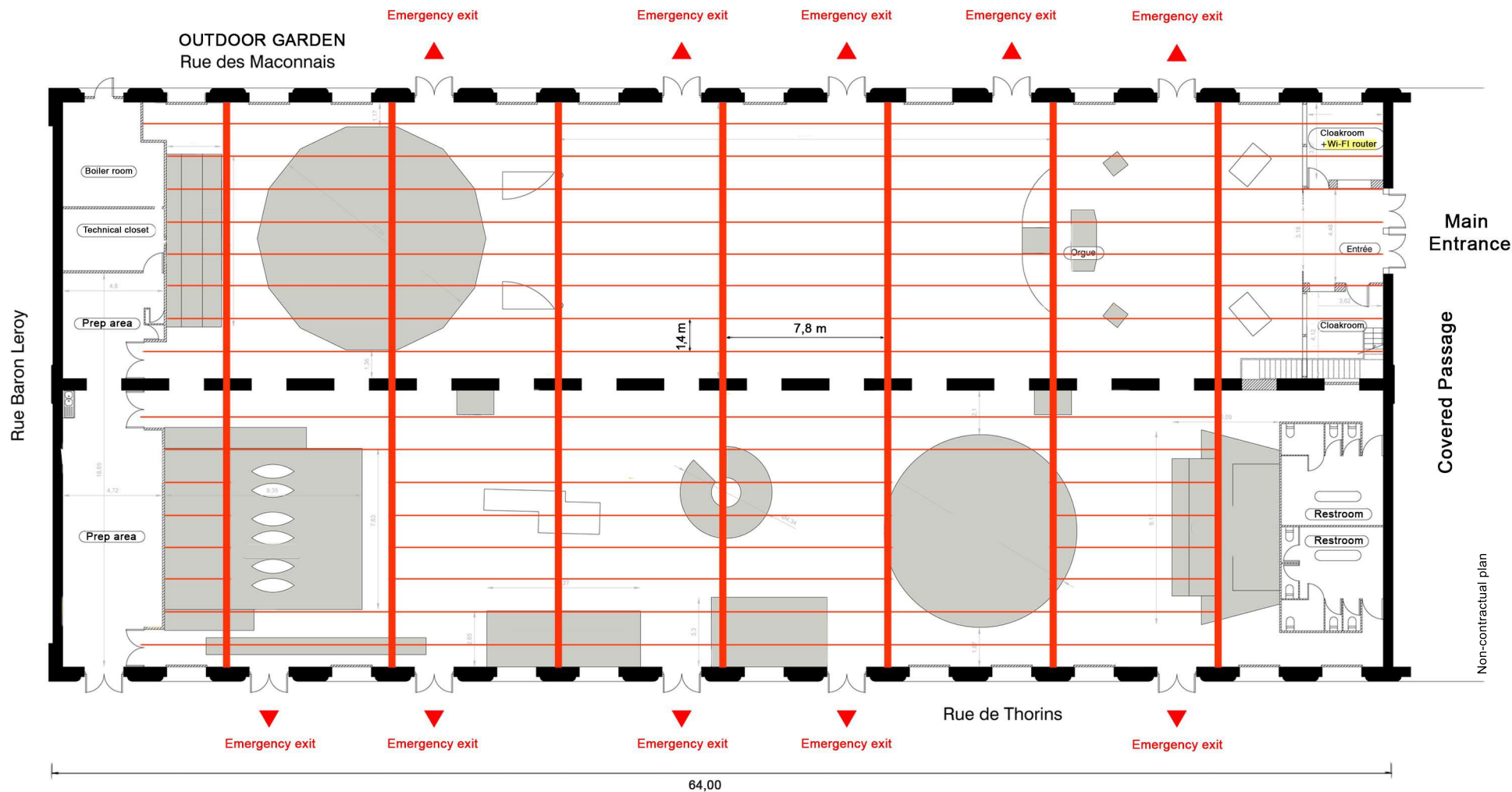




CEILING PLAN



Maximum weight resistance and hanging capacity of the girders per linear meter
Lengthways = 500 Kg
Crossways = 250 Kg





SOUND SPECIFICATIONS For receptions, conventions, dance nights (optional).

Diffusion :

1 processor Yamaha MTX 5
2 amplifiers Nexo 4 x 1000 W
2 speaker clusters (3 Nexo GO M 620 in Line-Array)
2 Subwoofers CD 12 Nexo cardioid
6 PS 10

Sources :

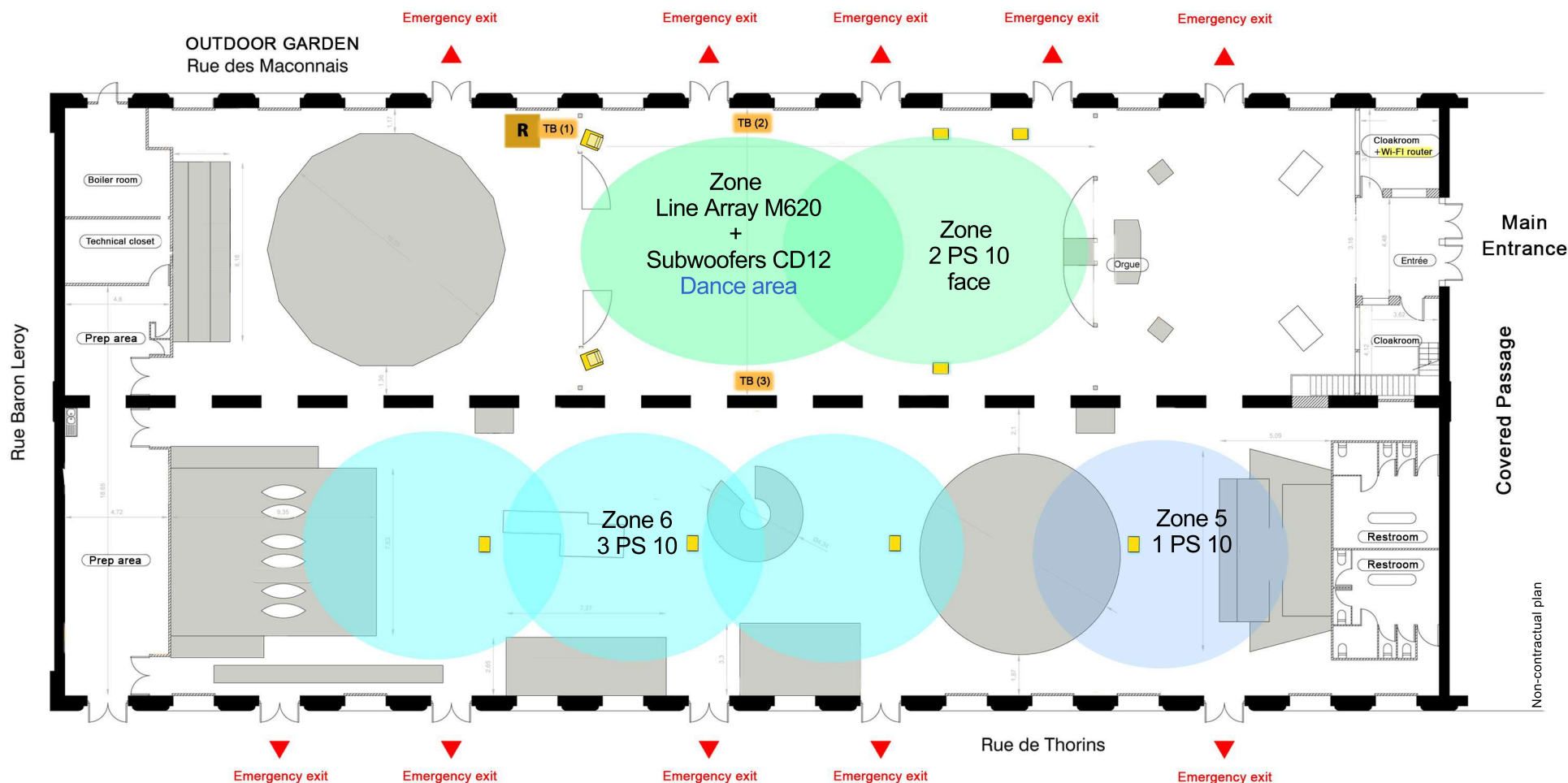
1 CD player
1 USB plug
1 HF microphone
1 Mini-jack plug for MP3

Audio-Toolbox :

Possibility to connect an external sound controller on the venue's sound system
(On quotation)

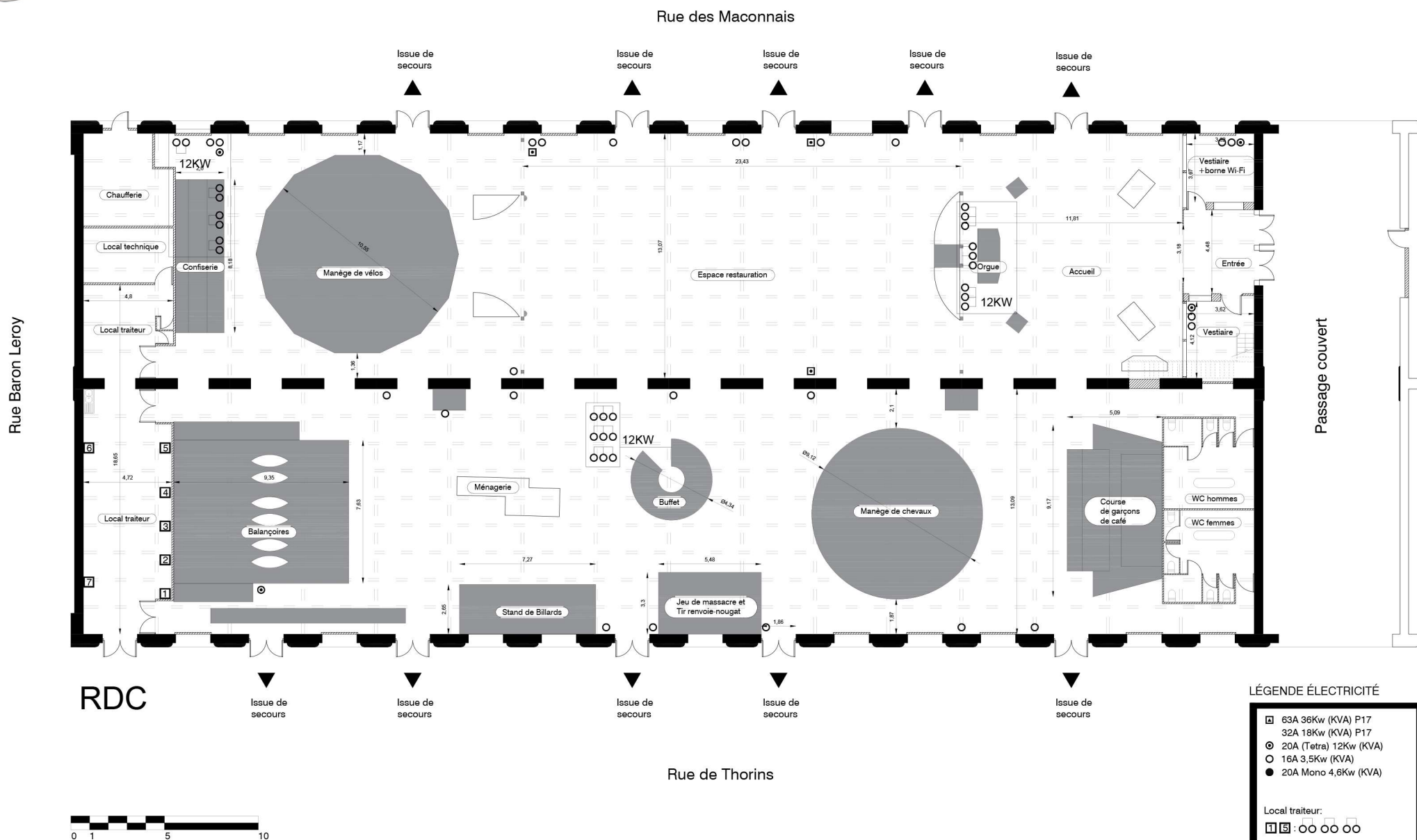
ZONING

R Sound control area
 3 speakers NEXO GO M620 in Line-Array + CD 12 subwoofers
 PS 10 NEXO
TB (1) Possible DJ TOOLBOX connection areas



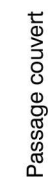
TECHNICAL SUMMARY

| | | |
|--|--|---|
| ELECTRICITY | Additional sockets : 63A sockets (P17) / 32A sockets (P17) / 16A sockets (domestic type) | |
| LIGHTING | Lighting managed by a DMX controller 32 channel The lighting is controlled by the room manager and can be adapted to the type of event | |
| SOUND | Diffusion : 1 processor Yamaha MTX 5 2 amplifiers Nexo 4 x 1000 W 2 speaker clusters (3 Nexo GO M 620 in Line-Array) 2 Subwoofers CD 12 Nexo cardioïd 6 PS 10 | Sources : 1 CD player 1 USB input 1 HF microphone 1 Mini-jack input for MP3 players |
| PREPARATION AREA FOR CATERERS | Ground floor access / Unloading area nearby Size: 72sqm usable space / water supply + sink Total electric power available 20 kw / 16A or 20A four-pole sockets (domestic type) | |
| DRESSING ROOMS FOR ARTISTS | 2 equipped dressing rooms : 8 spaces Shower Dinning area with microwave oven | |
| POSSIBLE ADDITIONAL EQUIPMENT BY SUPPLIERS | LIGHTING | Available power : 50 kw Connections : 63A (P17) / 32A (P17) sockets Hanging extra lighting equipment of the building's girders / refer to the room manager |
| | SOUND | For any additional sound system, please refer to your room manager. 90 db limitation. Approved orchestras & DJs only. |
| | VIDEO | Ideal conditions for video-projection |





Rue Baron Leroy



R+1 (+emprise haute décors)

Rue de Thorins

