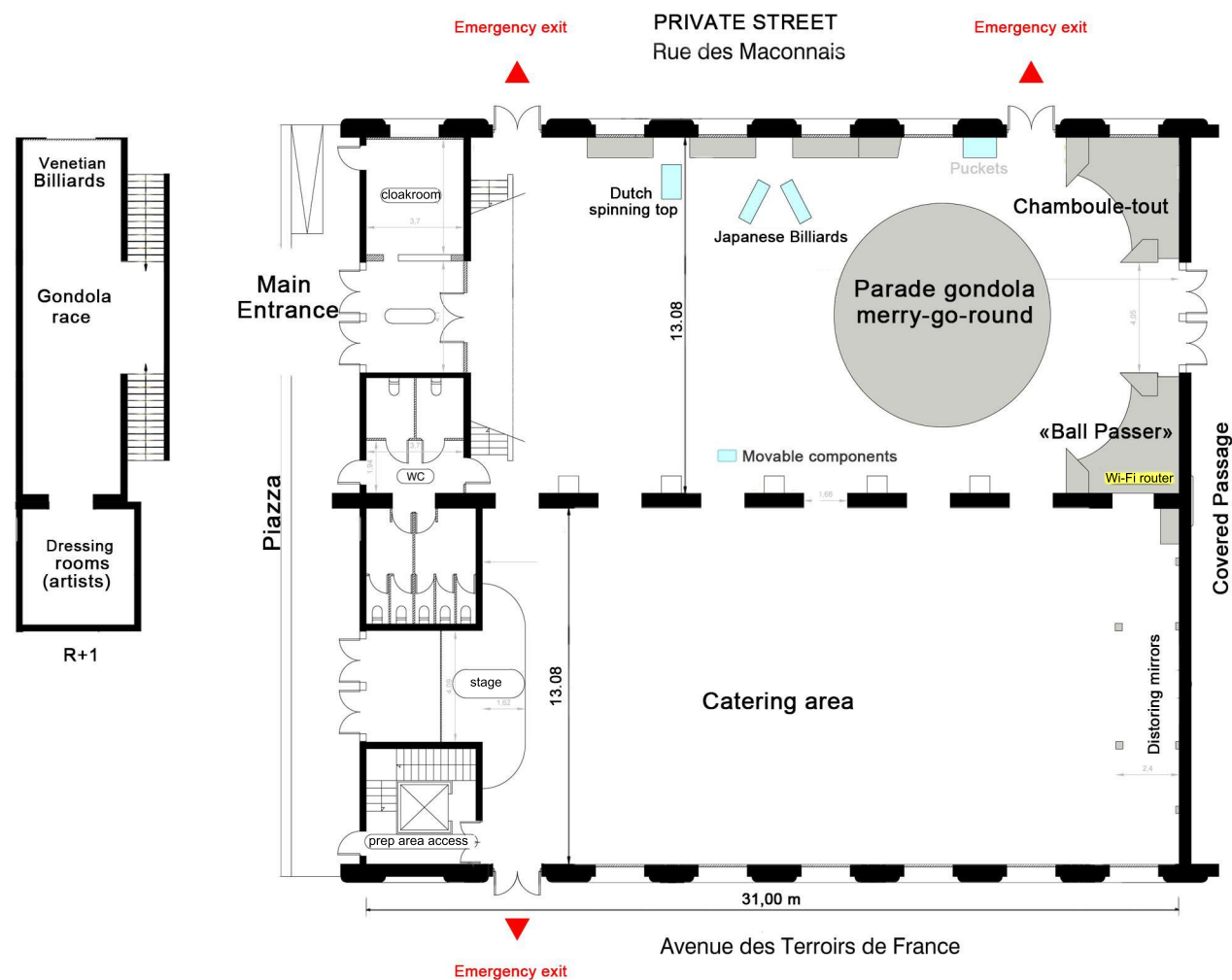




FEATURES Surface : 800sqm Maximum capacity : 600 people

Height under girders : +/- 4,5m Ridge height : 9,5 m

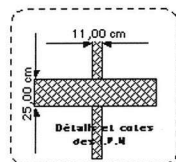
Entrance : 10 rue Lheureux



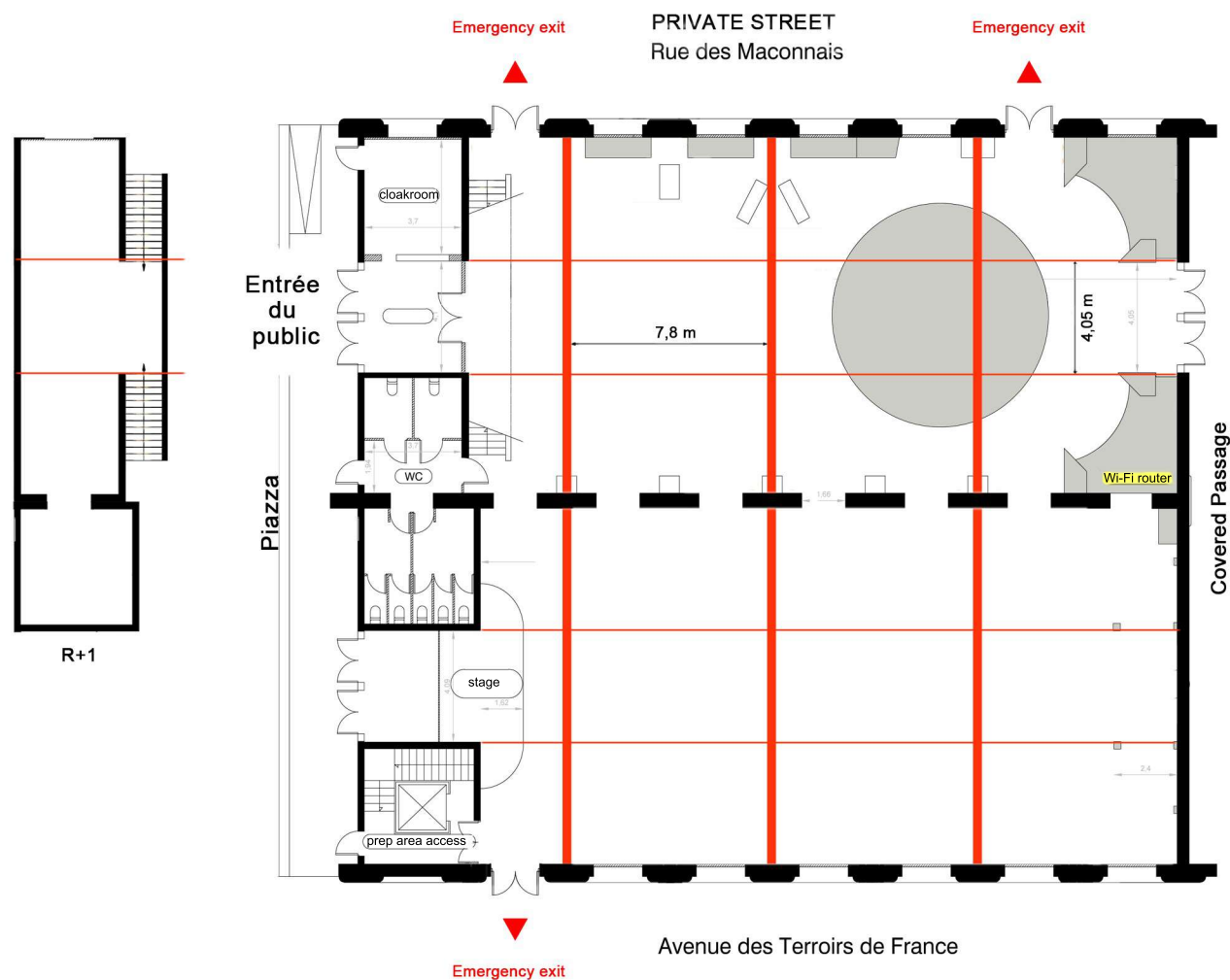
non-contractual plan



CEILING PLAN



Maximum weight resistance and hanging capacity of the girders per linear meter
Lengthways = 500 Kg
Crossways = 250 Kg





SOUND SPECIFICATIONS For receptions, conventions and dance nights.

Diffusion :

D.A.S speakers

BOSE speakers

Sources :

1 CD player

1 USB input

1 HF microphone

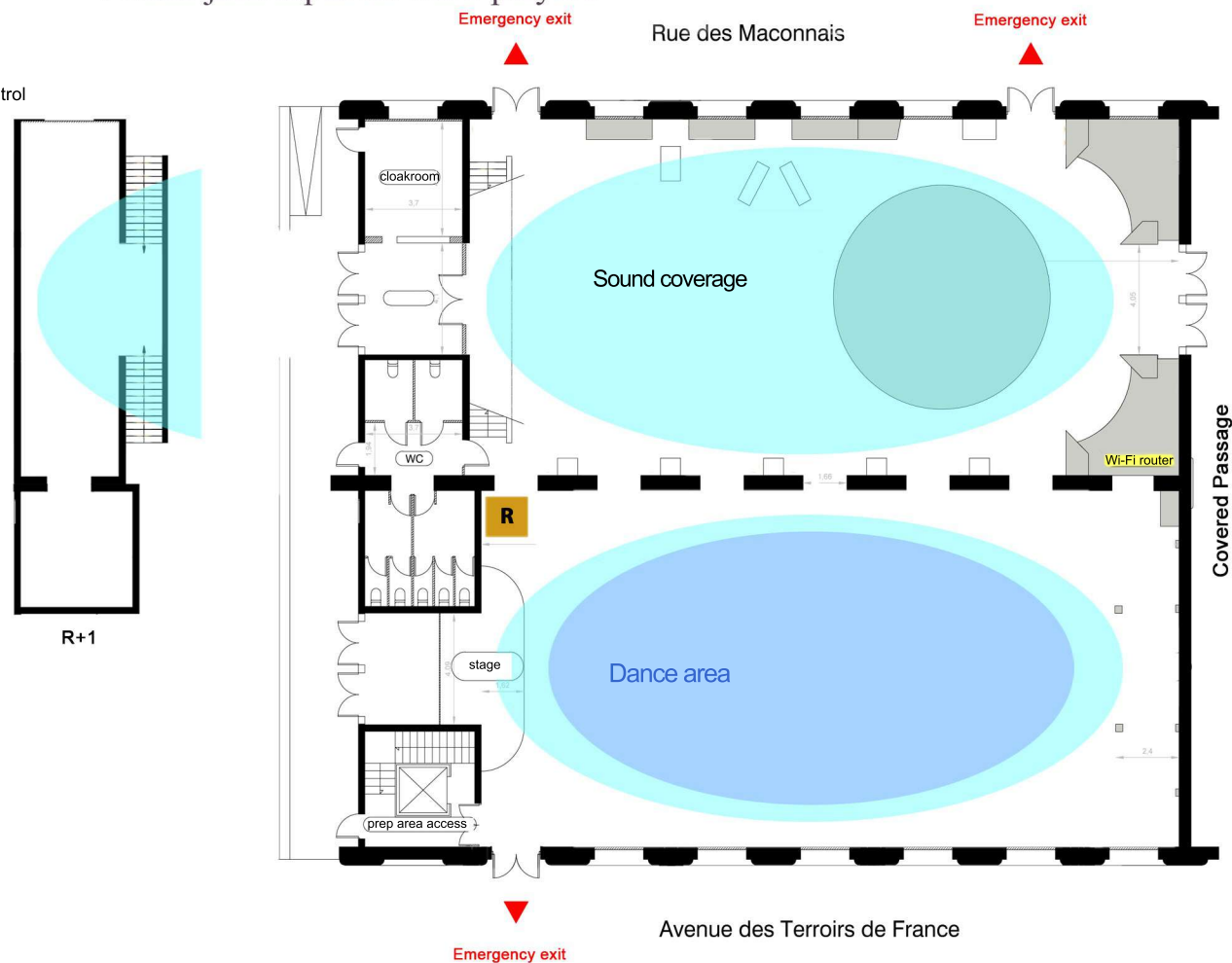
1 Mini-jack input for MP3 players

ZONING

R Sound control area

sound coverage

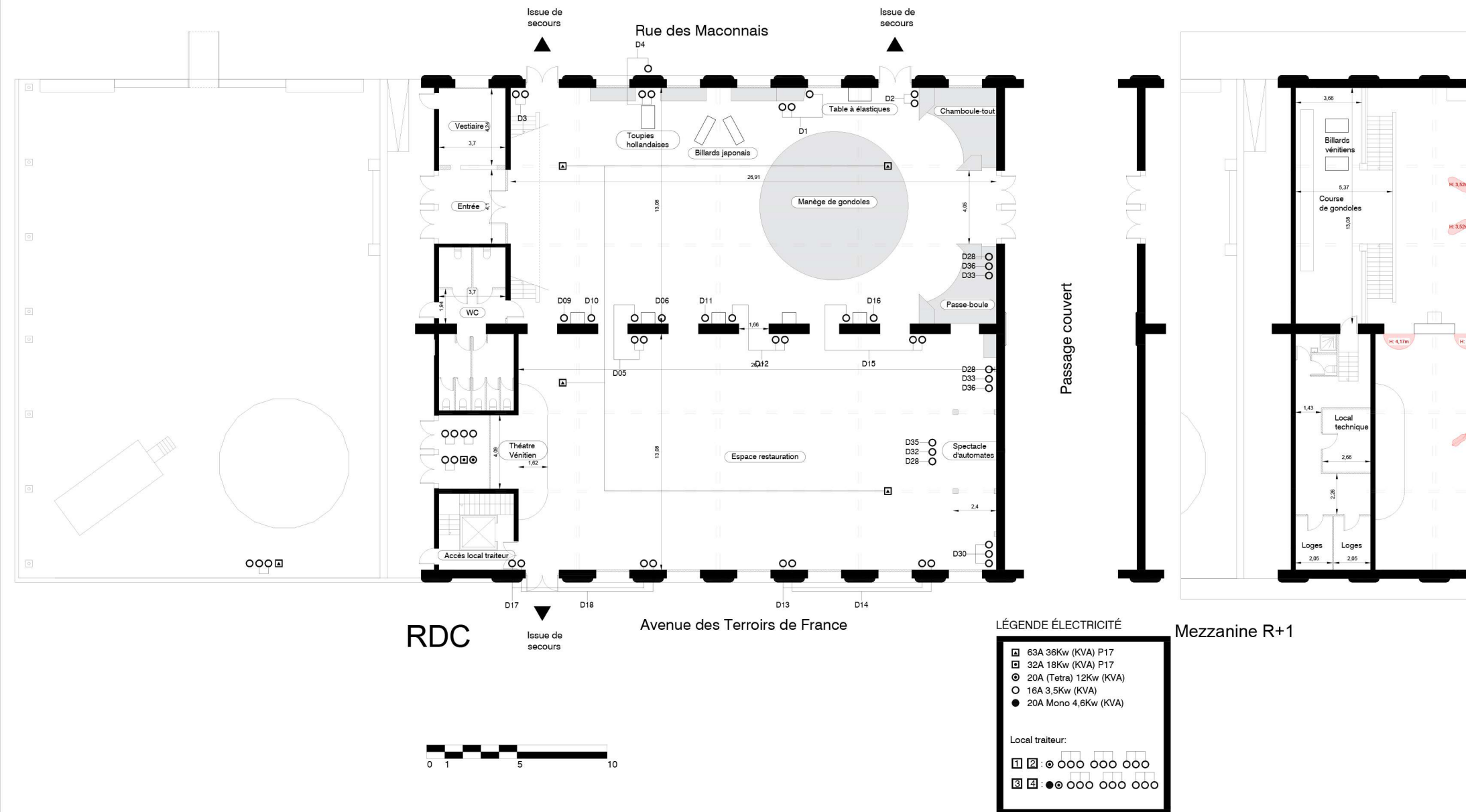
Dance area
(by suppliers)

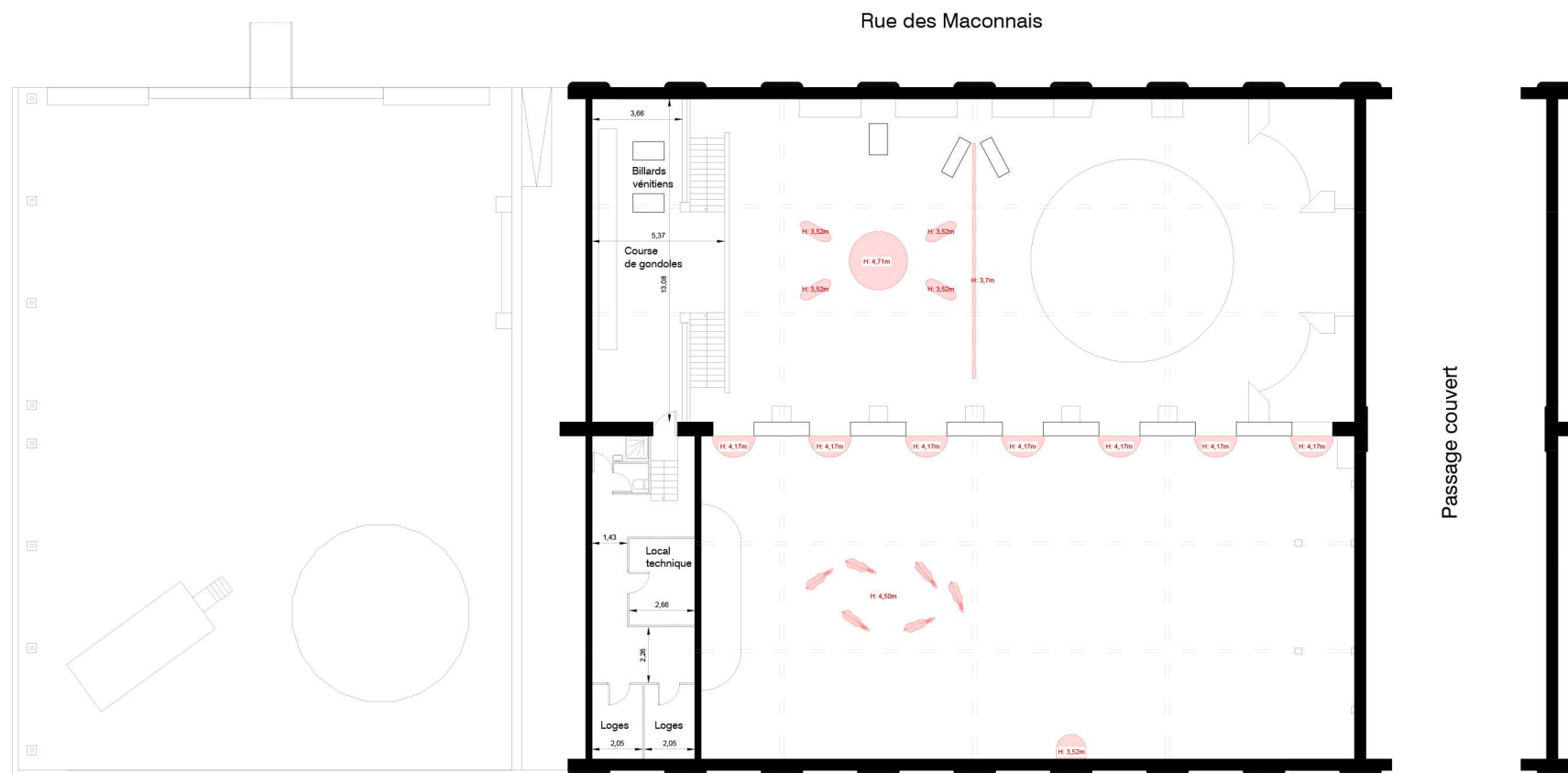




TECHNICAL SUMMARY

ELECTRICITY	Additional sockets : 63A sockets (P17) / 32A sockets (P17) / 16A sockets (domestic type)	
LIGHTING	Digital 24-channel control system The lighting is controlled by the room manager and can be adapted to the type of event	
SOUND	Diffusion : D.A.S speakers BOSE speakers	Sources : 1 CD player 1 USB input 1 HF microphone 1 Mini-jack input for MP3 players 1 Auxiliary input
PREPARATION AREA FOR CATERERS	In the basement. Lift and stairs access Size : 72sqm usable space / water supply + sink Total electric power available 20 kw / 16A or 20A four-pole sockets (domestic type)	
DRESSING ROOMS FOR ARTISTS	2 equipped dressing rooms: 8 spaces Shower Dinning area with microwave oven	
POSSIBLE ADDITIONAL EQUIPMENT BY SUPPLIERS	LIGHTING	Available power : 50 kw Connections : Prises 63A (P17) / 32A (P17) Refer to the room manager for hanging extra lighting equipment
	SOUND	For any additional sound system, please refer to your room manager. 90 db limitation.
	VIDEO	Ideal conditions for video-projection





R+1 (+emprise haute décors)

Avenue des Terroirs de France